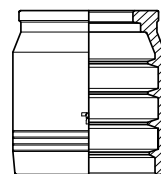


NO-SKIVE



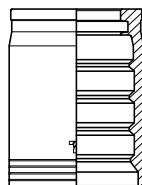
NO-SKIVE

BSN4

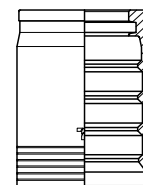
RUBBER HOSES STEEL WIRE SPIRAL - TUBI GOMMA SPIRALATI ACCIAIO

Hose Size			ISO 3862 4SP			ISO 3862 4SH			ISO 3862 R12 SAE100 R12			ISO 3862 R13 SAE100 R13			ISO 3862 R15 SAE100 R15			Collapse control mandrel Spina controllo collasso			
			Ferrule Boccola	Skiving length Lungh. di pelatura	Ø Swage (Ref.) Ø Press. (Rif.)	Ferrule Boccola	Skiving length Lungh. di pelatura	Ø Swage (Ref.) Ø Press. (Rif.)	Ferrule Boccola	Skiving length Lungh. di pelatura	Ø Swage (Ref.) Ø Press. (Rif.)	Ferrule Boccola	Skiving length Lungh. di pelatura	Ø Swage (Ref.) Ø Press. (Rif.)	Ferrule Boccola	Skiving length Lungh. di pelatura	Ø Swage (Ref.) Ø Press. (Rif.)		Ferrule Boccola	Skiving length Lungh. di pelatura	Ø Swage (Ref.) Ø Press. (Rif.)
DN	Inch	Dash	Part.N.	mm	mm	Part.N.	mm	mm	Part.N.	mm	mm	Part.N.	mm	mm	Part.N.	mm	mm	Part.N.	mm	mm	Part.N.
19	3/4"	-12	BSN412	no-skive	35,9	BSN412	no-skive	35,9	BSN412	no-skive	34,6	BSN412	no-skive	35,8	BSN412	no-skive	35,8				SCS12
25	1"	-16	BSN416	no-skive	43	BSN416	no-skive	42,1	BSN416	no-skive	41,5	BSN416	no-skive	42,2	BSN416	no-skive	42,1				SCS16
31,5	1 1/4"	-20				BSN420	no-skive	50,6	BSN420	no-skive	51,9										SCS20
38	1 1/2"	-24				BSN424	no-skive	60	BSN424	no-skive	60										SCS24
51	2"	-32				BSN432	no-skive	68,8	BSN432	no-skive	69,1										SCS32

OUTSIDE
SKIVE



BSS4



BSS6

OUTSIDE
SKIVE

RUBBER HOSES STEEL WIRE SPIRAL - TUBI GOMMA SPIRALATI ACCIAIO

Hose Size			ISO 3862 4SP			ISO 3862 4SH			ISO 3862 R12 SAE100 R12			ISO 3862 R13 SAE100 R13			ISO 3862 R15 SAE100 R15			Collapse control mandrel Spina controllo collasso			
			Ferrule Boccola	Skiving length Lungh. di pelatura	Ø Swage (Ref.) Ø Press. (Rif.)	Ferrule Boccola	Skiving length Lungh. di pelatura	Ø Swage (Ref.) Ø Press. (Rif.)	Ferrule Boccola	Skiving length Lungh. di pelatura	Ø Swage (Ref.) Ø Press. (Rif.)	Ferrule Boccola	Skiving length Lungh. di pelatura	Ø Swage (Ref.) Ø Press. (Rif.)	Ferrule Boccola	Skiving length Lungh. di pelatura	Ø Swage (Ref.) Ø Press. (Rif.)				
DN	Inch	Dash	Part.N.	mm	mm	Part.N.	mm	mm	Part.N.	mm	mm	Part.N.	mm	mm	Part.N.	mm	mm				Part.N.
19	3/4"	-12	BSS412	41,5	32,5	BSS412	41,5	32,7	BSS412	41,5	32,1	BSS412	41,5	33,2	BSS412	41,5	33,2				SCS12
25	1"	-16	BSS416	44,5	40,4	BSS416	44,5	40,3	BSS416	44,5	40,1	BSS416	44,5	40,8	BSS416	44,5	40,8				SCS16
31,5	1 1/4"	-20	BSS620	53	50,7	BSS420	52,5	46,4	BSS420	52,5	48	BSS620	53	51,3	BSS620	53	51,3				SCS20
38	1 1/2"	-24	BSS624	69	59,4	BSS424	68,5	57,4	BSS424	68,5	56	BSS624	69	60,8	BSS624	69	60,8				SCS24
51	2"	-32	BSS632	78	73,6	BSS432	78	68,8	BSS432	78	69,1	BSS632	78	75,7							SCS32